

## Installation instructions

# Multilayer parquet

## MULTIFLOR NOVOLoc® 5G

### 1200/1800/2200/2400

#### Natural and healthy living environment with parquet

To keep your exclusive hardwood floor at its best please pay attention to the following advices before installing it:

- One of the natural characteristics of wood is that it is hygroscopic, meaning that wood adapts to the moisture content of its environment. This process is commonly known as the swelling and shrinkage of the wood. If the air humidity exceeds 60% (in the summer months) or falls below 30% (during the heating season) the boards may undergo noticeable changes in dimension (gaps in the heating season and cupping in summer).
- The parquet is supplied with a moisture content of 7% +/- 2%. These 7% +/- 2% are meant for an air humidity from 30 to 60% and a room temperature kept at constantly 18–24°C. This room climate not only protects your wood floor but also enhances your comfort and health and so is recommended to be kept. Out of the recommended room climate

structural damages can't be avoided. We recommend using air humidifier during the heating season and air dehumidifier or short ventilation at high air humidity to maintain this optimum climate.

- The installation of a Fidbox® relieves compliance of healthy indoor environment. The climate values can be conveniently controlled automatically by Fidbox®-App.
- Wood is a natural product and may show differences in colour and structure – for those reasons we will not accept complaints. Before installation you have to make sure that the parquet planks have no defects. For installed floors we will not admit a claim.

#### Preparing for installation

Careful preparation is the basis for a perfectly installed hardwood floor. We strongly recommend making following preparatory steps before you start installing your floor:

- Make sure that the subfloor, on which you wish to install your parquet floor, is dry, clean and even (3mm within 1000mm). When using underfloor heating the cement screed must not exceed 1,8% residual moisture and anhydrite screed must not exceed 0,3% residual moisture. Without underfloor heating the residual moisture must not exceed 2,0% regarding cement screed and 0,5% concerning the anhydrite screed.
- In new buildings the windows should be kept slightly open for some weeks prior to installation. We recommend heating and ventilating the room regularly in interseasonal periods and in winter.

• All work involving water or moisture (tiling, painting, wallpapering, plastering) should be completed prior to installation.

• Do not store the packaged parquet planks on fresh screeds in new buildings! Supporting blocks must be used.

• Unpack the parquet planks only immediately prior to installation!

• Please note that the installation temperature must be at least 18°C and humidity below 65%.

• For a harmonious overall view always use several parquet packages and install at the same time.

#### Glue-down installation

We recommend leaving glue-down installation to an expert. If you decide to install the floor by yourself please note the recommendations for preparation and this installation instructions.

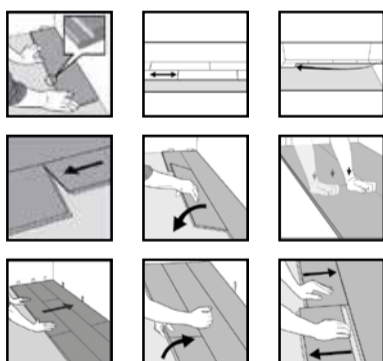
Depending on the condition of the subfloor, a pretreatment (primers, coatings) according to manufacturer's instructions may be necessary. The firmness of the screed has to be high enough. Use only adhesives that are specifically recommended for glue-down installation of prefinished hardwood floors. We recommend low emission, water- and solvent-free glue. Please follow the instructions of the adhesive manufacturer.

1. Begin installation in the lefthand corner of the room. The first row of planks is aligned with the tongue side towards the wall. Check using a string line for long distances.
2. Leave an expansion space of minimum 10 mm between the floor and the wall.
3. Use a notched trowel to spread adhesive only on the area where the next planks are to be laid according to manufacturer's instructions. Do not exceed the open time of the adhesive.

4. Place the floor planks onto the adhesive bed. Ensure optimum adhesive transfer by pressing and weighting down the planks against the subfloor. Do H gluing for tongue and groove at the ends of the planks. Glue is applied on the upper lip of the groove. Take care that no adhesive gets on the floor surface.

5. Once the first three rows have been laid, leave the adhesive to cure over night, and continue the installation on the following day.

6. Do not walk on the parquet floor for 48 hours after installation in order to allow the adhesive to dry and cure sufficiently. We recommend placing weights around the perimeter of the floor.



#### Installation on heated subfloors

Parquet can also be installed over radiant heated subfloors, if done properly. Hardwood floors have favourable thermal resistance values that are neither too high nor too low. Wooden floors always feel warm under foot, even if the underfloor heating is turned off. Engineered hardwood floors are subject to far less swelling and shrinkage than solid hardwood floors. Wood species like beech and maple react very quickly to unfavourable climatic conditions, which may cause gaps to form between the planks. We recommend using wood species

with low swelling and shrinking characteristics, e.g. oak, for installation over radiant heated floors. The room temperature ought to be between 18–24°C at any time. The relative humidity of the air ought to be between 30% and 60%. The surface finish must also be taken into account. Open pored surface finishes, such as oiled/waxed finishes, react to variations in the room climate much faster than environmentally friendly varnished surfaces. The surface temperature must not exceed 27°C.

#### Cleaning and maintenance

Please contact your hardwood floor dealer for instructions and appropriate cleaning and maintenance products.

#### Downloads

Installation instructions are available at:

<http://www.scheucherparkett.at/scheucher/en/downloads/>



**Scheucher Holzindustrie GmbH**

Zehensdorf 100, 8092 Mettersdorf a. S.  
www.scheucherparkett.at

06

ÖNORM EN 14342:2013

Mehrschichtparkett mit Novoloc-Verbindung zur vollflächigen Verklebung  
Multilayer parquet with Novoloc connection for glue-down installation.



Brandverhalten Reaction to fire mind. Dichte / mind. Dicke min. density / min. thickness	vollflächige Verklebung auf Estrich / glue-down installation on screed: C <sub>s</sub> -s1 500 kg/m <sup>3</sup> Dichte/density, 9 mm Dicke / thickness
Formaldehydabgabe Emission of formaldehyde	E1
Pentachlorphenol Emission of pentachlorophenole	<5 × 10 <sup>-6</sup>
VOC-Emissionen release of dangerous substances	erfüllt die Anforderungen des AgBB-Schemas fulfills demands of AgBB-scheme
Bruchfestigkeit Breaking strength	NPD
Rutschverhalten Slipperiness	NPD
Wärmeleitfähigkeit Thermal conductivity	0,17 W/mK
Biol. Dauerhaftigkeit Biological durability	Klasse 1 class1